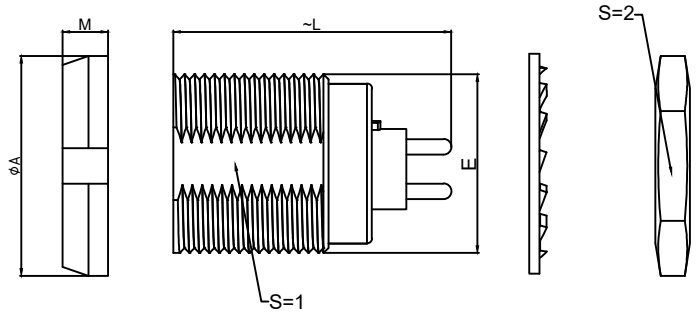
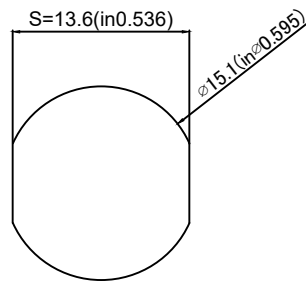


1.View and size(视图及尺寸)

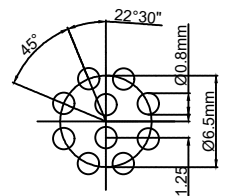
Main technical indicators(主要技术指标)	
1.Mating (插拔次数)	5000
2.Working Temperature (温度)	-55~+150 °C
3.IP Rating (防护级别)	IP 50
4.Diameter of socket end(插合端直径)	φ0.9MM
5.Vtest (AC) /测试电压(交流)	800V
6.Vtest (DC) /测试电压(直流)	1200V
7.Rated Current (额定电流)	7A
8.Shell material(壳体材质)	Brass (chrome plated) shell and collet nut, nickel plated brass latch sleeve and mid pieces /黄铜（镀铬）外壳和夹头螺母，镀镍黄铜锁套和中间件
9.Pin Material(插针材料)	Copper alloy gold plating(铜合金镀金)
10.Insulator material(绝缘体材质)	PPS



	A	L	E	M	S1	S2
MM	φ20	24.5	M15*1	3.5	13.5	17
in	0.79	0.96		0.14	0.53	0.67



Pane hole size (面板开孔尺寸)



Pcb plate opening size (PCB板开孔尺寸)

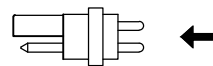
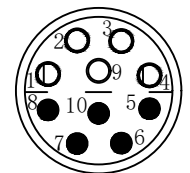


Plate joint master rubber core (板接型母胶芯)



Welded surface (焊接面)

Sum up(总结)	
Series(系列)	B
Shell style/model (外壳样式/型号)	ZRD: Fixed receptacle with two nuts (back panel mounting)/带两个螺母的固定插座（背板安装）
Button (按键)	Hermaphroditic keying (half moon insert) with female pin 1/雌雄同体键控（半月形插入），带母销1
Termination type (终止类型)	Female print PCB(印刷PCB)
Line diameter awg(线材直径)	28AWG-20AWG
Cable diameterφ (电缆直径)	-
Match plug(匹配插头)	TFA.2S.P10.CLAD32

Sum up(总结)	
Humidity (max)/湿度最大	<=95% [at 60 deg C /140 F] /<=95%[在60摄氏度/140摄氏度时]
Vibration/震动	15g [10 Hz - 2000 Hz]
Shock Resistance/抗冲击性	100 g [6 ms]
Climatical Category /气候类别	50/175/21
Salt Spray Corrosion/盐雾测试	>48 hr/>48小时

	A	B	C√	ANGLE	
5-10	±0.02	±0.05	±0.1	0°-30°	±0.1°
50-100	±0.1	±0.15	±0.2	61°-90°	±0.5°
50-100	±0.15	±0.2	±0.25		
100-	±0.15%	±0.20%	±0.25%		

ZRD.2S.P10.C L N

Model(型号)

Series(系列)

Needle core configuration(针芯配置)

Outer casing(外壳)

Insulator(绝缘体)

Needle core(针芯)

DESIGNED(设计)	DATE(日期)	SCALE(比例)	N/A(不适用)	MODEL TYPE
CHECKED(校对)	DATE(日期)	VIEW(视图)		型号类型: ZRD.2S.P10.CLN
APPROVED(审核)	DATE(日期)	UNIT(单位)	MM	PART NO. 2S10-core socket 名称: 2S10芯插座
REVISIONS		MATERIAL (材料)		DWG NO.:
www.helloxkb.com www.helloxkb.cn		XKB INDUSTRIAL PRECISION CO.,LIMITED		WEIGHT(重量) SHEET(表) REVISION(修订)
				1/1 A0