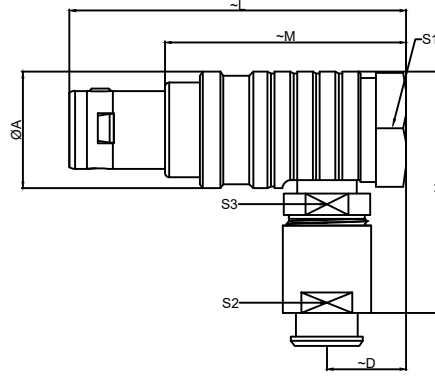


| Main technical indicators(主要技术指标) | |
|-----------------------------------|--|
| 1.Mating (插拔次数) | 5000 |
| 2.Working Temperature (温度) | -55 ~ +150 °C |
| 3.IP Rating (防护级别) | IP 50 |
| 4.Diameter of socket end(插合端直径) | φ0.9 |
| 5.Testing Voltage (测试电压) | 1200V |
| 6.Working Voltage (工作电压) | 1200V |
| 7.Rated Current (额定电流) | 9A |
| 8.Shell material(壳体材质) | Brass (chromium plating) shell and chuck nut/(nickel plating) pin sleeve and middleware/黄铜(镀铬)外壳和夹头螺母/(镀镍)插销套和中间件 |
| 9.Pin Material(插针材料) | Copper alloy gold plating(铜合金镀金) |
| 10.Insulator material(绝缘体材质) | PPS |

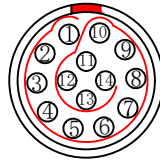
| Sum up(总结) | |
|-----------------------------|---------------------------------------|
| Series(系列) | B |
| Shell style/model (外壳样式/型号) | THG: Elbow plug, cable collet/ 电缆夹头弯头 |
| Button (按键) | A button(一个按键) |
| Termination type (终止类型) | Male solder(公焊锡) |
| Line diameter awg(线材直径) | 30-22AWG |
| Cable diameterφ (电缆直径) | φ5.3-6.2MM |
| Matching parts(配件) | ZGG.3B.P14.CLL |

| Location pin combination(定位销组合) | | | |
|---------------------------------|--|---------------|-------------------------|
| 编号 Number | Number of positioning pins(定 位销数量) | Angle(角 度) | Series(系列)-3B |
| G | One(1) | | (Zero degrees)0° |
| A | Two(2) | A | Thirty degrees(30°) |
| B | Two(2) | | Forty-five degrees(45°) |
| C | Two(2) | | Sixty degrees(60°) |
| D | Two(2) | γ | 95 degrees (95°) |
| E | Two(2) | β | 120 degrees(120°) |
| F | Two(2) | | 145 degrees(145°) |
| J | Two(2) | A | 37.5degrees(37.5°) |
| K | Two(2) | | 52.5degrees(52.5°) |
| L | Two(2) | γ | Seventy degrees(70°) |

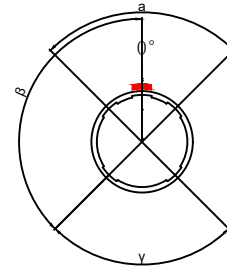
| | A | B | C√ | ANGLE | |
|--------|--------|--------|--------|---------|-------|
| 5-10 | ±0.02 | ±0.05 | ±0.1 | 0°-30° | ±0.1° |
| 50-100 | ±0.1 | ±0.15 | ±0.2 | 61°-90° | ±0.5° |
| 50-100 | ±0.15 | ±0.2 | ±0.25 | | |
| 100- | ±0.15% | ±0.20% | ±0.25% | | |



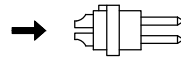
| | A | D | H | L | M | S1 | S2 | S3 |
|----|-------|--------|--------|--------|-------|--------|--------|--------|
| MM | 19 | 10 | 36 | 50.0 | 35 | 17 | 15 | 15 |
| in | 0.748 | 0.3937 | 1.4173 | 1.9685 | 1.378 | 0.6693 | 0.5906 | 0.5906 |



Welded surface
(焊接面)



Positive view
(正视图)



Solder core
(焊接型公胶芯)

TH G. 3B. P14.C L A D 62 H

- Model(型号)
 - Positioning pin(定位销)
 - Series(系列)
 - Needle core configuration(针芯配置)
 - Outer casing(外壳)
 - Insulator(绝缘体)
 - Needle core(针芯)
 - Type of clamp(线夹类型)
 - Cable diameter(电缆直径)
- SH means a sheath type, not a cover type.
(H表示护套型, 不表示为不带护套型)

| | | | | | | |
|----------------------------------|--|----------|--------------------------------------|--------------|----------|--|
| DESIGNED(设计) | | DATE(日期) | | SCALE(比额) | N/A(不适用) | MODEL TYPE 型号类型: THG.3B.P14.CLAD.62H |
| CHECKED(校对) | | DATE(日期) | | VIEW(视图) | | PART NO. 3B14-core plug 名称: 3B14芯插头 |
| APPROVED(审核) | | DATE(日期) | | UNIT(单位) | MM | DWG NO.: |
| REVISIONS | | | | MATERIAL(材料) | | |
| www.helloxkb.com www.helloxkb.cn | | | XKB INDUSTRIAL PRECISION CO.,LIMITED | | | WEIGHT(重量) SHEET(表) REVISION(修订) 1/1 A0 |